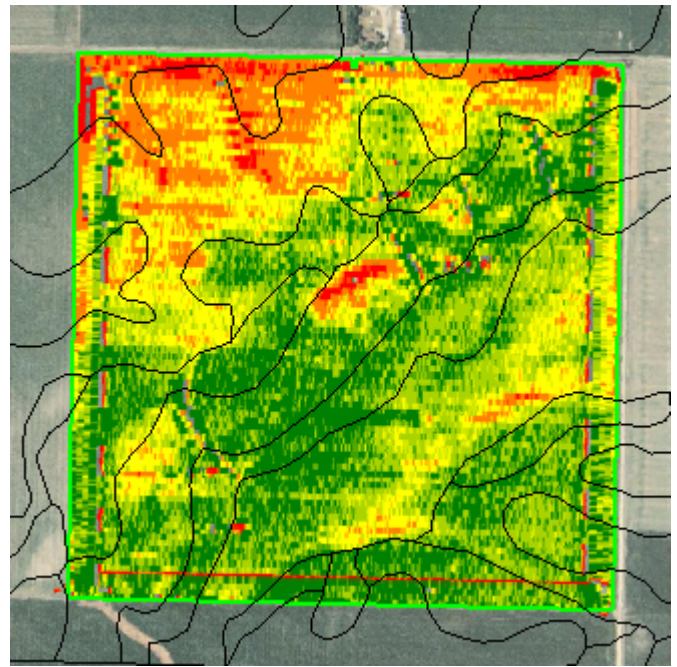
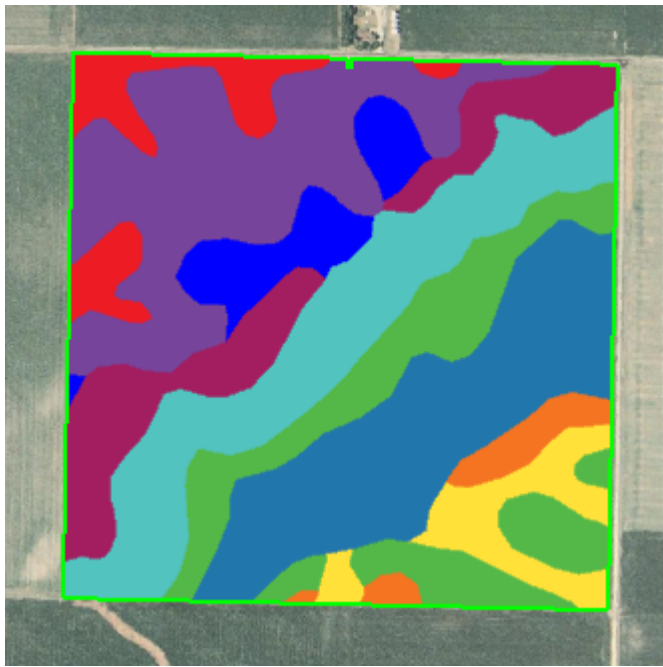


# Yield by Soil Type



Grower: Sample Farmer  
 Farm: Sample 1  
 Field: 1  
 Area: 158.54 ac

Dry Yield - Corn - 2013

- 14.04 - 174.96 (5.70 ac)
- 174.98 - 214.22 (19.36 ac)
- 214.23 - 240.65 (33.60 ac)
- 240.65 - 261.64 (51.46 ac)
- 261.64 - 350 (47.08 ac)

Legend	Map Unit Symbol	Map Unit Name	Avg	Dry Yield Min	Dry Yield Max	Avg Moisture	Total Bushels	Acres
<span style="color: green;">■</span>	198A	Elburn silt loam, 0 to 2 percent slopes	259.34	14.55	350.00	18.24 %	6,048.34	23.32
<span style="color: orange;">■</span>	199A	Plano silt loam, 0 to 2 percent slopes	258.78	79.72	350.00	18.58 %	1,067.65	4.13
<span style="color: yellow;">■</span>	191A	Knight silt loam, 0 to 2 percent slopes	257.34	63.18	350.00	18.98 %	2,204.97	8.57
<span style="color: cyan;">■</span>	748C2	Plano silt loam, sandy substratum, 5 to 10 percent slopes, eroded	254.40	16.70	350.00	17.86 %	6,811.58	26.78
<span style="color: purple;">■</span>	737B	Tama silt loam, very deep to sand, 2 to 5 percent slopes	250.89	16.18	350.00	17.60 %	4,077.00	16.25
<span style="color: blue;">■</span>	705A	Buckhart silt loam, 0 to 2 percent slopes	250.23	21.76	350.00	17.76 %	2,232.66	8.92
<span style="color: darkblue;">■</span>	152A	Drummer silty clay loam, 0 to 2 percent slopes	247.52	25.15	350.00	18.80 %	7,218.21	29.16
<span style="color: purple;">■</span>	43A	Ipava silt loam, 0 to 2 percent slopes	220.47	14.04	350.00	16.96 %	7,012.71	31.81
<span style="color: red;">■</span>	68A	Sable silty clay loam, 0 to 2 percent slopes	199.30	23.27	350.00	16.73 %	1,645.07	8.25